

Rehabilitation of the M3 Road (Chişinău – Comrat – Giurgiuleşti – Romanian Border), km 211.98–213.69, and of the M3.1 Road (Giurgiuleşti – Ukrainian Border), km 0.0–0.65 (connection road to the Giurgiuleşti–Reni and Giurgiuleşti–Galaţi border crossing points)

ANNEX 4

Project beneficiary:



Prepared by:



MARCH 2026

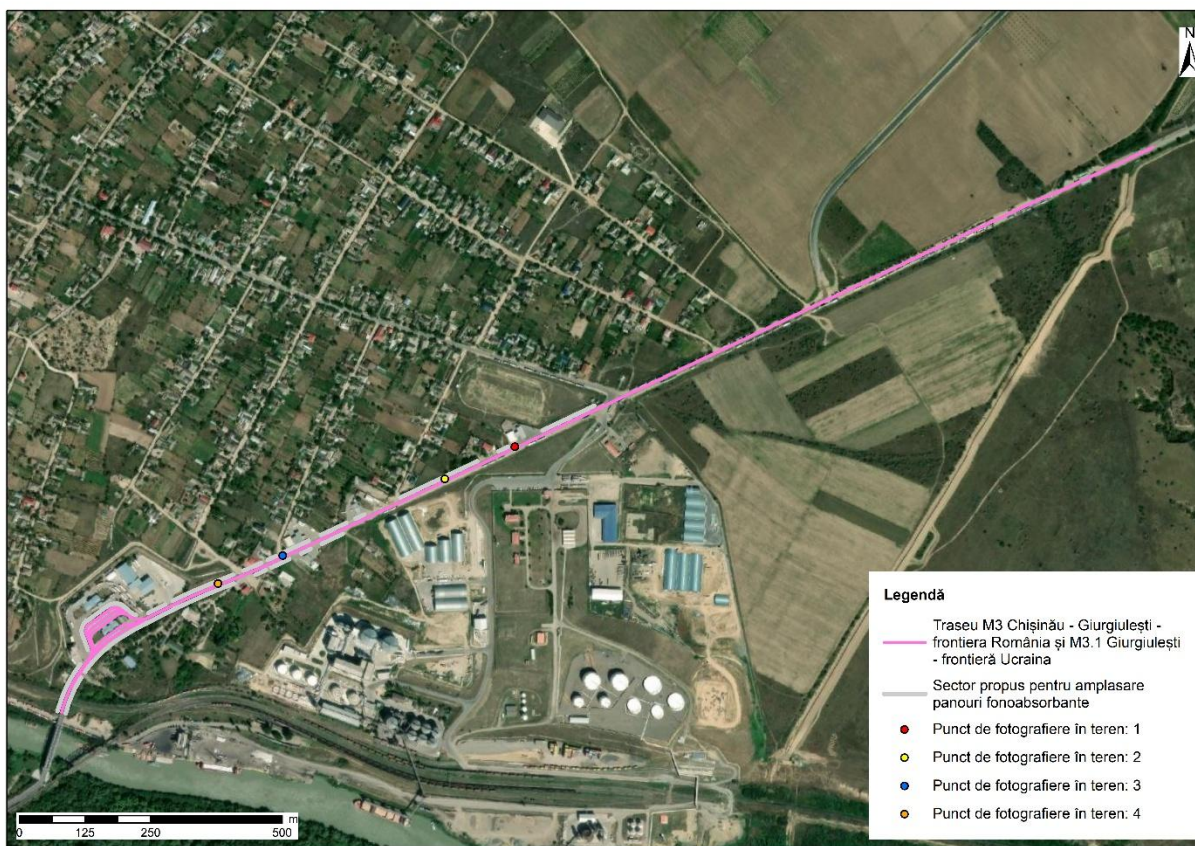


Figure 1. Location of field photography points, Road M3 Chisinau – Comrat – Giurgiulesti – border with Romania, km 211.98 – 213.69



Figure 2. Road M3 Chisinau – Comrat – Giurgiulesti – border with Romania, km 211.98 – 213.69, the proposed sector for the installation of sound-absorbing panels between km 212+495 – 231+690 (right). Photograph point - GPS coordinates (EPSG:4326): Lat. 45.476267 N, Long. 28.208617 E, southwest direction



Figure 3. Road M3 Chisinau – Comrat – Giurgiulesti – border with Romania, km 211.98 – 213.69, the proposed sector for the installation of sound-absorbing panels between km 212+495 – 231+690 (right). Photograph point - GPS coordinates (EPSG:4326): Lat. 45.475767 N, Long. 28.206883 E, southwest direction



Figure 4. Road M3 Chisinau – Comrat – Giurgiulesti – border with Romania, km 211.98 – 213.69, the proposed sector for the installation of sound-absorbing panels between km 212+495 – 231+690 (right) and km 213+035 (left). Photograph point - GPS coordinates (EPSG:4326): Lat. 45.474567 N, Long. 28.202867 E, southwest direction



Figure 5. Road M3 Chisinau – Comrat – Giurgiulesti – border with Romania, km 211.98 – 213.69, the proposed sector for the installation of sound-absorbing panels between km 212+495 – 231+690 (right) and km 213+035 (left). Photograph point - GPS coordinates (EPSG:4326): Lat. 45.474133 N, Long. 28.201267 E, southwest direction